

FamilyLink



Frances McClelland
Institute for Children,
Youth & Families

Improving lives of children, youth, and families

FALL 2025

Greetings from the Frances McClelland Institute for Children, Youth, and Families,

In this annual report, we highlight our achievements in 2025 and preview our plans for 2026. This year, we engaged in multiple activities to meet our goals to share timely, actionable research, including hosting a speaker series, providing accessible resources on our website, including a new infographic series on timely topics, and sharing research generated by our affiliated faculty and students. We also successfully advanced our strategies to educate the next generation of engaged scholars and leaders. We continued to partner to facilitate undergraduate experiential learning through community-based internships with Cooperative Extension and other organizations. Thanks to generous donors, we provided financial support for graduate students to pursue peer-reviewed manuscripts and dissertation research on critical topics facing children, youth and families. Our faculty and graduate students conducted innovative research that spanned topics from early child care access, to risk and resilience among sexual and gender minority adolescents and their families, to family processes in Latinx families, and coparenting and healthy romantic relationships in diverse contexts. This research shared an underlying focus on identifying youth, family and community strengths, and informing policies. The excellence of this research was recognized with grants, awards, invited presentations and publications.

In line with our commitment to meaningful community engagement, we moved the annual Frances McClelland Vision Awards Ceremony off-campus in October for a celebratory and moving event that included a youth mariachi performance and honored seasoned and emerging leaders and organizations. This event highlighted how our community in Southern Arizona comes together to support each other. The Science of Kindness Community Collective (SciKind) led by Dr. Jeannette Mare engaged in multiple collaborative strategies with a variety of new partners, including the launching of KindCats, an on-campus group of students dedicated to sharing the science of kindness to build more kind places.

As families and communities navigate ongoing and emerging challenges, we are very grateful to our supporters, donors, students, and community partners for helping us to meet our goal to work collaboratively to harness the power of research to build strong communities that promote family resilience so that children and youth from marginalized communities have opportunities to thrive. Please visit our website, fmi.arizona.edu, to learn about our research, events, and resources. Follow and like us on social media. Thank you for your support.

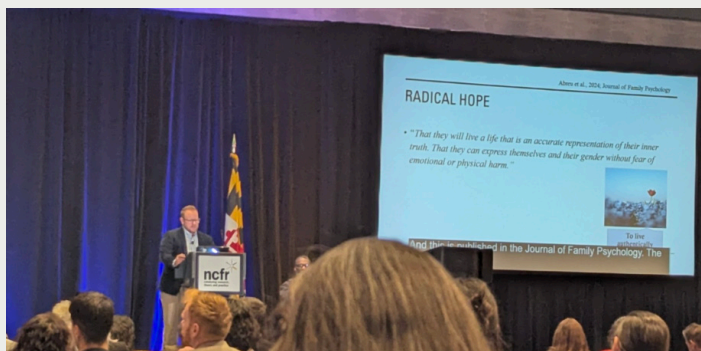
Please visit our website, fmi.arizona.edu, to learn about our research, events, and resources. Follow and like us on social media. Thank you for your support.

-Melissa A. Barnett, Ph.D.

*Director, The Frances McClelland Institute for
Children, Youth, and Families*

2025 By The Numbers:

- Hosted our annual Spring Poster Showcase: **9** posters were presented by undergraduate and graduate student researchers
- Hosted **5** talks in the Turbeville Speaker Series on various topics ranging from digital archives on Borderlands to understanding the psychology of wellbeing and place.
- Co-sponsored **2 film screenings** with the Children's Advocacy Center of Southern Arizona and other community and campus partners of the film titled "Resilience: The Biology of Stress & the Science of Hope"
- Printed **12** posters for academic conferences
- Hosted our annual Vision Awards Ceremony attended by 71 people and supported by **4** sponsors and **11** donors
- Awarded **2** Osburn Dissertation Fellowships
- Awarded **2** Osburn Summer Fellowships
- Celebrated **32** HDFS students, faculty, and alumni who received awards, grants, publications and other noteworthy achievements
- Celebrated **3** HDFS graduate students who completed their masters or doctorate degrees
- Engaged **158** viewers through the Turbeville Speaker Series via recorded presentations on YouTube
- Reached **56** participants through live Turbeville Speaker Series presentations on Zoom.



Frances McClelland
Institute for Children,
Youth & Families

Science of Kindness Community Collective

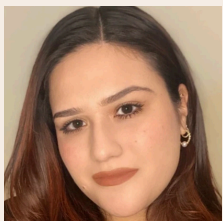
Over the past year, the Science of Kindness Community Collective (SciKind) continued to strengthen its role as a research and translation hub dedicated to understanding and advancing kindness, connection, and wellbeing across campus and community contexts. Grounded in behavioral science and social-ecological frameworks, SciKind brought together faculty, staff, students, and community partners to examine how kind behavior is shaped by beliefs, norms, and environments—and how those insights can be applied in meaningful ways. Undergraduate students engaged with this work through the SciKind Vertically Integrated Project (VIP), gaining hands-on experience in kindness-focused research under the mentorship of Dr. Jeannette Maré

During the academic year, SciKind completed data collection for a campus-wide kind behavior belief elicitation study involving students and employees, laying the foundation for future evidence-based strategies to increase kind behavior across the university and into the community. This work was complemented by applied learning and outreach through the Kind Cats initiative, where students participated in poster forums, conference presentations, and community engagement opportunities that translated research into practice. SciKind also partnered with the Eller College of Business as the sponsor of the 2025 Eller Case Competition, engaging nearly 800 undergraduate students in developing messaging campaigns to promote kind behavior across Tucson. In addition, SciKind expanded its public-facing outreach through an invitation from Sage Publishing to feature the Science of Kindness Community Collective and Kind Cats work in a research-to-community impact series, with plans underway to further disseminate kindness science through a new science communication–focused Instagram platform. Together, these efforts reflect a growing ecosystem that integrates rigorous research, student learning, cross-campus collaboration, and community impact.



SCIENCE OF KINDNESS
COMMUNITY COLLECTIVE

FMI Graduate Student Fellowships



Congratulations to our **2025 Osburn Summer Fellow: Alyssa Garcia**. Garcia is an HDFS graduate student who used the Osburn Dissertation Fellowship to pursue her manuscript titled: *Validating the Conflict Resolution Style Inventory for Adolescent Parents*.



Congratulations to our **2025 Osburn Summer Fellow: Victoria Cooper-Roundy**. Cooper-Roundy, HDFS graduate student, used the Osburn Dissertation Fellowship to pursue her manuscript titled: *The Power of a Village: Examining How Family and Community Support and Experiences of Discrimination Shape Black Fathering Identity and Involvement*. Cooper-Roundy was also **2025 Osburn Dissertation Fellow!** Her dissertation explores how Black fathers' experiences, beliefs, and behaviors shape child development, contributing valuable insights into the processes that foster family resilience.



Congratulations to our second **2025 Osburn Dissertation Fellow: Marissa Hettinger**. Hettinger's dissertation research explores how psychological stress related to climate change impacts families—a timely and vital contribution to our understanding of family resilience in the face of environmental challenges.

The 2025 Frances McClelland Vision Awards Ceremony

The Vision Awards were created to celebrate the legacy of Frances McClelland, who was a generous and tireless advocate for children, youth, and families, especially those experiencing adversity and injustice. Frances exemplified, supported, and celebrated resilience during her lifetime. The annual awards are given to those who share Frances's and FMI's vision of strong communities that support family resilience so that all children and youth, especially those experiencing disadvantages, have the opportunity to thrive. We also honor the legacies of two other late visionary leaders in our community, who were part of the FMI family, Richard Elías, and Josefina Ahumada. This year we held the ceremony at the Frances McClelland Community Center, home to our partner, the YWCA of Southern Arizona. It was a lively evening that celebrated our Southern Arizona culture and community. We are grateful to our event sponsors and donors. It was attended by 71 individuals who came together to honor and celebrate the inspirational winners.

- The Frances McClelland Vision Award - Louise Thomas
- The Richard Elías Legacy Award - Alfredo Valenzuela
- The Frances McClelland Youth Vision Award - Pueblo High School Student Instructors in the Davis Bilingual Summer Mariachi Program
- The Josefina Ahumada Spirit Organizational Award - Arizona Justice For Our Neighbors



2025 Winners



To learn more about the award winners and watch the ceremony video, please visit:

<https://fmi.arizona.edu/vision-awards-2025-ceremony>

Graduate Student Accomplishments

Congratulations to the 2025 FMI Graduate Students who completed their master's theses or dissertations in Human Development & Family Science.

MASTER'S DEGREES



Priscila Gámez Hernández, MS
Thesis: *Barriers to Education Among Mexican-origin Adolescents: The Roles of Familism and Educational Values*

DOCTORAL DEGREES



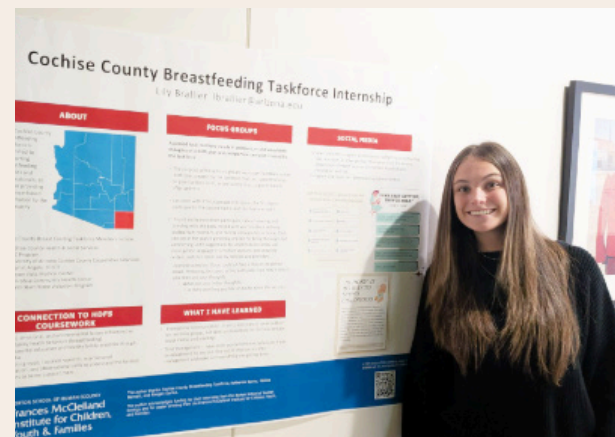
Kayla Osman, PhD
Dissertation: *Shades of Identity: Examining the Interplays of Racism and Colorism on Ethnic-Racial Identity, Skin Tone Satisfaction, and Skin Tone Centrality among Latine Youth*



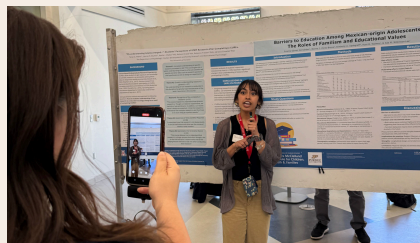
Kealie Walker, PhD
Dissertation: *Stigma, Stress, and Developmental Assets in the Lives and Educational Experiences of Latinx Pregnant and Parenting Adolescents*

Applied Research Internship Program

In 2025, we continued our commitment to community-engaged learning by supporting undergraduate students through applied internships with community partners. Two students completed paid internships with Tucson Village Farm and the Cochise County Breastfeeding Taskforce, gaining hands-on experience in applied research, outreach, and program support. Through these placements, students strengthened skills in communication, critical thinking, and community-based work while contributing to initiatives that promote health and wellbeing across Southern Arizona. These partnerships reflect our ongoing efforts to prepare students for careers in community leadership, research, and public service. We have four new internship placements for Spring 2026.



Applying Research to Tackle Pressing Problems



Concluding the Spring 2025 semester, we hosted our annual Poster Showcase featuring 9 presentations by graduate and undergraduate students and research teams. Posters encompassed a variety of projects, including undergraduate honors theses, independent study projects, and graduate student research showcased at professional conferences. Archived on our website, this lively event serves FMI's goal to nurture the future generation of scholars and community leaders.

Turbeville Speaker Series 2025 Recap

During 2025, the Frances McClelland Institute's Turbeville Speaker Series featured five scholarly presentations addressing research and practice related to the wellbeing of children, youth, and families. The series provided a forum for interdisciplinary knowledge exchange among faculty, students, and community professionals. Sessions were delivered in a hybrid format, with 56 participants attending live via Zoom, 58 participants in-person, and 158 additional viewers accessing recorded presentations through YouTube. These dissemination efforts supported the Institute's mission to translate research into practice and to foster dialogue on issues central to human development and family wellbeing.

<https://fmi.arizona.edu/pamela-turbeville-speaker-series>

Research You Can Use

This year, the Frances McClelland Institute produced two research-based infographics developed by graduate students and faculty, translating scholarly findings into accessible resources for community members, practitioners, and families. These infographics highlight practical, evidence-informed insights in Spanish and English related to child and family wellbeing and are designed for real-world application. To view and download these resources, visit our Community Resources page:

<https://fmi.arizona.edu/community-resources>

ABOUT FMI



The Frances McClelland Institute for Children, Youth, and Families at the University of Arizona bridges research and practice by supporting innovative research to tackle the most pressing issues facing

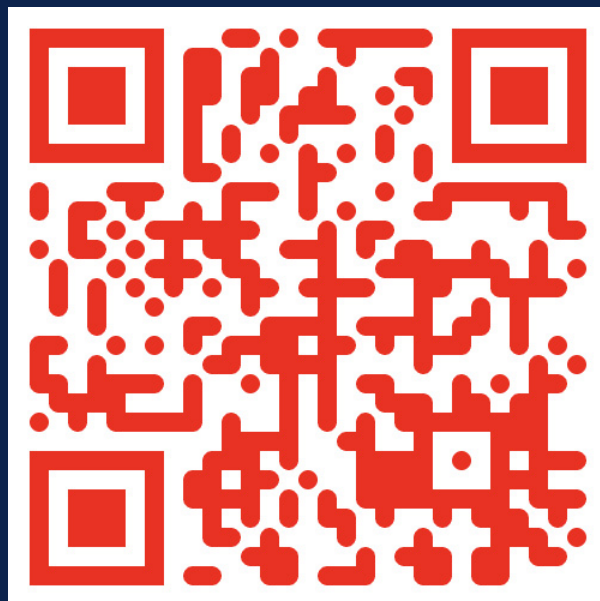
families today, partnering to put research into the hands of families and practitioners, and educating the next generation of scholars and community leaders. Private support is fundamental to the origin and sustainability of the Frances McClelland Institute. We hope you partner with us in our mission to build strong communities that promote family and community resilience so that children and youth experiencing adversity have opportunities to thrive.

UPCOMING EVENTS

- **Friday, January 30th, 2026 from 1:00 - 2:15 PM**
Pamela Turbeville Speaker Series with Dr. Thao Ha:
"Development of Adolescent Romantic Relationships in the Digital Age".
In-person event. MCPRK RM 402
- **Friday, February 20, 2026 from 1:00 - 2:15 PM**
Pamela Turbeville Speaker Series with Dr. Nicole Lorig
"TBA."
Hybrid event. MCPRK RM 402 or Zoom
- **Friday, March 27, 2026 from 1:00 - 2:15 PM**
Pamela Turbeville Speaker Series with Dr. Dan McDonald & Colleagues:
Engaging Community through Financial Literacy Education."
Hybrid event. MCPRK RM 402 or Zoom
- **Friday, May 1, 2026 from 12:30- 2:30 PM**
Spring Poster Showcase 2026
Forbes Lounge
In person event.

Thank you for supporting FMI!

Please invest in our work by visiting our website.



Frances McClelland
Institute for Children,
Youth & Families

Address:
PO Box 210078
Tucson, AZ 85721-0078

Email:
families@arizona.edu

Phone: 520.621.8067

Website:
<https://fmi.arizona.edu/>

FOLLOW US ON SOCIAL MEDIA!



Facebook, LinkedIn, Instagram:
[@uazfmi](#)