

FamilyLink



Frances McClelland
Institute for Children,
Youth & Families

Improving lives of children, youth, and families

FALL 2024

Greetings from the Frances McClelland Institute for Children, Youth, and Families,

In this annual report, we highlight our accomplishments in 2024 and preview our plans for 2025. This year, we engaged in a variety of activities aimed at meeting our goals to share timely, actionable research, including hosting a speaker series, launching a redesigned website, and sharing research generated by our affiliated faculty and students. We also significantly advanced our strategies to educate the next generation of engaged scholars and leaders. Thanks to a generous gift we were able to maintain our Lang Summer Fellowships to support graduate students to write first-author peer-reviewed manuscripts and we launched the first class of Osburn Dissertation Fellows to provide funding for one year for graduate students to complete their dissertations on topics related to promoting the wellbeing of children, youth and families. We also developed and implemented a successful community-based applied internship program for undergraduate students by partnering with local non-profit and government organizations and Cooperative Extension offices.

We were honored to hold the annual Frances McClelland Vision Awards Ceremony on-campus in October. This inspirational event provided an opportunity to recognize emerging and established leaders. Collectively, this year's winners have advanced wellbeing and economic and educational equity and inclusion for marginalized populations, and in doing so they have enhanced our communities for everyone. We also continued the tradition of past awardees presenting awards to the current winners along with former FMI Director, Dr. Andrea Romero. This event truly feels like a family reunion and community celebration.

We built on our growth last year, as the newly launched Science of Kindness Community Collective (SciKind) led by Dr. Jeannette Mare engaged in multiple collaborative strategies with a variety of new partners to promote action-focused research and programming to build a community of practice to increase kind behavior. We also continued to integrate The Community Research, Evaluation & Development (CRED) team into FMI. CRED is a dynamic interdisciplinary team specializing in evaluation, research design, data analysis, and community engagement. CRED focuses on generating accessible, actionable information to support informed program and policy decision-making. CRED provided two valuable methods workshops we organized on creating data dashboards and interactive maps. CRED also successfully partnered with us to secure a three-year federal grant from the Administration on Children and Families to track equitable access to infant and toddler child care in Arizona.

Looking ahead to 2025, we will work closely with partners on and off-campus. In Spring 2025 we will host three talks in our Turbeville speaker series. Two of these talks will focus on aspects of the science of kindness and one talk will focus on the Arizona-Mexico Borderlands region. SciKind will launch their KindCats campus-wide initiative that engages undergraduate students. Thanks to a community engagement grant that we secured from the University of Arizona Office of Research, Innovation and Impact along with a group of community partners that includes the United Way of Tucson and Southern Arizona, we will launch the Tucson Parent Villages Study. This project will focus on a program that brings parents together to build community and gain advocacy skills.

We are very grateful to our supporters, donors, students, and community partners for helping us to meet our goal to work collaboratively to build strong communities that promote family resilience so that children and youth from marginalized backgrounds have opportunities to thrive.

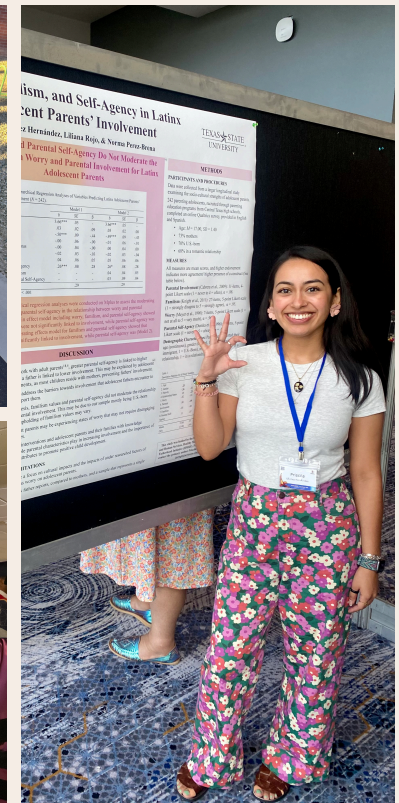
Please visit our website, fmi.arizona.edu, to learn about our research, events, and resources. Follow and like us on social media. Thank you for your support.

-Melissa A. Barnett, Ph.D.

Director, The Frances McClelland Institute for Children, Youth, and Families

2024 By The Numbers:

- Hosted our annual Spring Poster Showcase: **26** posters were presented by undergraduate and graduate student researchers
- Hosted **4** talks in the Turbeville Speaker Series on various topics ranging from youth voice to race and political beliefs to human-dog relationships
- Hosted **2** methods workshops facilitated by the Community Research and Evaluation Development (CRED) Team
- Featured **10** Faculty/Grad Student research projects during the Data Blitz
- Co-sponsored a **film screening** with the Children's Advocacy Center on the film titled "Resilience: The Biology of Stress & the Science of Hope"
- Printed **15** posters for academic conferences
- Hosted our annual Vision Awards Ceremony; awarded **4** awards
- Awarded our **first** Osburn Dissertation Fellowships to **2** graduate students
- Awarded **2** Lang Summer Fellowships
- Celebrated **31** HDFS students, faculty, and alumni who received awards, grants, publications and other noteworthy achievements
- Celebrated **8** HDFS graduate students who completed their masters or doctorate degrees
- Placed **12** undergraduate researchers in community and Cooperative Extension internships
- Secured community engagement **grant** from the University of Arizona Office of Research Innovation and Impact



FMI-affiliated graduate students presented posters at several conferences including the 2024 meeting of the International Association for Relationship Research.

Science of Kindness Community Collective

The Science of Kindness Community Collective is in its early stages, with initial meetings engaging researchers and practitioners from across disciplines and campus units. Participants include faculty from Human Development and Family Science, Communication, Psychology, Sociology, the Eller School of Management, Art, Architecture, the College of Medicine, and other academic areas, as well as representatives from Campus Health, Counseling and Psychological Services, Student Success and Retention, Residence Life, Campus Safety, and more. Examples of collaboration within the collective include: Professors from Communication and Psychology presenting about kindness at the Turbeville Speaker Series; and Support from multiple university units for the proposal to the provost to fund the Kind Cats initiative. These early efforts are laying the groundwork for a collective that will drive kindness-focused research and initiatives across campus and beyond.

Student engagement has also been a cornerstone, with initiatives like the VIP team, the Kind Cats Research Club, and STAR Lab mentorships fostering experiential learning in kindness-focused research. Over 4,500 individuals have been reached through 37 speaking engagements, ranging from large keynotes to specialized academic and community events. Together, these efforts advance the mission to embed kindness into systems and communities for meaningful, long-lasting impact.

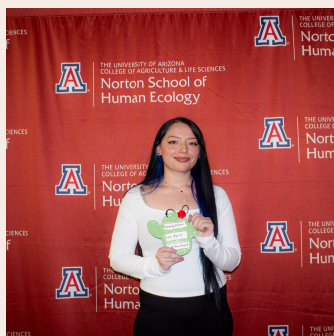
SCIENCE OF KINDNESS
COMMUNITY COLLECTIVE

The 2024 Frances McClelland Vision Awards Ceremony

The Vision Awards were created to celebrate the legacy of Frances McClelland, who was a generous and tireless advocate for children, youth, and families, especially those experiencing adversity and injustice. Frances exemplified, supported, and celebrated resilience during her lifetime. The annual awards are given to those who share Frances's and FMI's vision of strong communities that support family resilience so that all children and youth, especially those who are most disadvantaged, have the opportunity to thrive. We also honor the legacy of another late visionary leader in our community, Richard Elías, a longtime community advocate and leader, who served on the Pima County Board of Supervisors and the FMI Advisory Council. The event was inspirational and included a tribute to an outstanding community leader and FMI friend we lost in 2024, Josefina Ahumada. It was attended by 54 individuals who came together to honor and celebrate the work being done to improve the well-being of children, youth, families, and communities.

- The Frances McClelland Vision Award - Bonnie Bazata
- The Richard Elías Legacy Award - Maria C. Federico Brummer
- The Frances McClelland Youth Vision Award - Luna Aguirre
- The Frances McClelland Spirit Organizational Award - Interfaith Community Services

To learn more about the award winners and watch the ceremony video, please visit <https://fmi.cales.arizona.edu/2024-vision-awards-ceremony>



FMI Graduate Student Fellowships



Congratulations to our **2024 Lang Summer Dissertation Fellow: Mahek Shah**. Mahek, HDFS graduate student, used the Lang Dissertation Fellowship to pursue her first-author manuscript titled, *Pathways Linking Depressive Symptoms, Financial Stress, Constructive Conflict, and Coparenting Alliance in Unmarried, Lower-Income Mothers and Fathers*.



Congratulations to **Kayla Osman**, HDFS graduate student, who was also selected as a recipient of the **2024 Lang Summer Fellowship**. Kayla wrote a manuscript titled, *Racial Discrimination and Skin Tone Self-Concept on the Skin Tone Satisfaction of Latinx Youth*. Kayla was also the recipient of the inaugural **2024 Osburn Dissertation Fellowship**. Her dissertation research will focus on racism and colorism within Latinx adolescents and young adults.



Congratulations to our second **2024 Osburn Dissertation Fellow: Kealie Walker**. Kealie's dissertation research will focus on implementing a strengths-based perspective to identify processes contributing to positive school-related outcomes among pregnant and parenting adolescents.

Graduate Student Accomplishments

Congratulations to the 2024 FMI Graduate Students who completed their master's theses or dissertations in Human Development & Family Science.

MASTER'S DEGREES



Grace Aroz-Moscoco, MS
Thesis: *Interparental Conflict, Support and Affection, and Coparenting Alliance among Lower-Income, Unmarried Couples During the Transition to Parenthood*



Mahek Nirav Shah, MS
Thesis: *Pathways Linking Depressive Symptoms, Financial Stress, Constructive Conflict, and Coparenting Alliance in Unmarried, Lower-Income Mothers and Fathers*

DOCTORAL DEGREES



Selena Carbajal, PhD
Dissertation: *Examining the Links and Complexity of Cultural-Developmental Tasks: Ethnic-Racial Identity and Bicultural Competence among US Latine Samples*



Elia Hilda Matano- Bueno, PhD
Dissertation: *The Role of Familial Engagement on Latina Adolescents' Identity, Self-Efficacy, and Persistence in STEM*



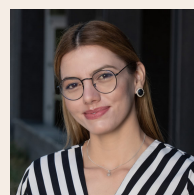
Jacy Farkas, PhD
Dissertation: *Positive Youth Development & Resilience among Youth with Disabilities in Foster Care during their Transition to Adulthood*



Sydney Hainsworth, PhD
Dissertation: *Associations Among Social Contexts and Relationships with Trans and Nonbinary Youths' Mental Health*



Evelyn Danilova Sarsar, PhD
Dissertation: *Racial Discrimination, Individual Resources, and Coping Among Latinx Adolescents: A Longitudinal and Within-Person Analysis*



Maria Belinda Vazquez, PhD
Dissertation: *Unveiling Sources of Resilience and Social Support Dimensions: Honoring Mexican Immigrant Experiences in a Borderlands Community-Based Participatory Project*

Applying Research to Tackle Pressing Problems



Concluding the Spring semester of 2024, we hosted our annual Poster Showcase featuring 26 presentations by graduate and undergraduate students. Posters encompassed a variety of projects, including undergraduate honors theses, independent study projects, graduate student research showcased at professional conferences, and the culminating projects from undergraduate courses on Program Planning and Evaluation and Research Methods. Archived on our website, this lively event serves FMI's goal to nurture the future generation of scholars and community leaders.

Applied Research Internship Program

We advanced our aims to collaborate with community partners and to educate the next generation of community leaders and scholars by developing and implementing an applied community-based internship program. In Spring 2024, thanks to a grant from the University of Arizona Foundation Board of Trustees, we launched the Building Applied Community Research Skills program, a community-engaged paid internship for undergraduates. Eight students interned with partners including United Way of Tucson and Southern Arizona, Pima County Office of Workforce Development, City of Tucson Community Safety, Health and Wellness Program, Jewish Family and Children's Services, The Haven, SARSEF, Gila County 4-H, and Ben's Bells. We built on the success of this program to launch a similar program in Fall 2024, thanks to funding from University of Arizona Cooperative Extension to place 5 students in Cooperative Extension sites based in three counties and one statewide position. Students contributed to the work in their placement sites through tasks like creating resource guides, collecting data, analyzing organizational outcomes, and developing program outreach materials. In both semesters students also completed an online professional development course to scaffold their hands-on learning experiences. Overall, students gained skills such as critical thinking, communication, and adaptability while learning about applied research, cooperative extension, nonprofit operations, and public policy impacts. We are very grateful to the mentors in these organizations who invested in helping the students learn and grow. We are actively seeking funds to continue and expand this program in the future.

Thank you for supporting FMI!

Thank you to all of our donors and to our 2024 Vision Awards sponsors.



Teal Level Sponsorship

ABOUT FMI



The Frances McClelland Institute for Children, Youth, and Families at the University of Arizona bridges research and practice by supporting innovative research to tackle the most pressing issues facing families today, partnering to put research into the hands of

families and practitioners, and educating the next generation of scholars and community leaders. Private support is fundamental to the origin and sustainability of the Frances McClelland Institute. We hope you partner with us in our mission to build strong communities that promote family and community resilience so that children and youth experiencing adversity have opportunities to thrive. Please invest in our work by visiting our website.

<https://fmi.arizona.edu/donors>



UPCOMING EVENTS

- **Friday, February 7, 2025 from 1:00 - 2:15 PM**
Pamela Turbeville Speaker Series with Dr. Michelle Tellez: *"Oral Histories and Digital Archives in the Borderlands."* **Hybrid event. MCPRK RM 402 or Zoom:** <https://bit.ly/40hzNkM>
- **Friday, March 21, 2025 from 1:00 - 2:15 PM**
Pamela Turbeville Speaker Series with Dr. Steve Rains will be the first presenter on the Kindness Series: *"Social Support as Kindness: The Properties and Dynamics of Effective Supportive Communication."* **Hybrid event. MCPRK RM 402 or Zoom:** <https://bit.ly/3E3t2eF>
- **Friday, April 11, 2025 from 1:00 - 2:15 PM**
Pamela Turbeville Speaker Series with Dr. Jessica Hanna-Andrews will be the second speaker in our Kindness Series, presenting on the vital topics of mental health and the role of social interactions and connections in fostering well-being. **Hybrid event. MCPRK RM 402 or Zoom:** <https://bit.ly/4hcPIYD>
- **Friday, April 25, 2025 from 12:00 - 2:30 PM**
FMI Student Poster Showcase. **In person event. Forbes Building Lobby, 1140 E. South Campus Dr.**



Frances McClelland
Institute for Children,
Youth & Families

Address:
PO Box 210078
Tucson, AZ 85721-0078

Email:
families@arizona.edu

Phone: 520.621.8067

Website:
<https://fmi.arizona.edu/>

FOLLOW US ON SOCIAL MEDIA!



Facebook, LinkedIn, Instagram:
[@uazfmi](#)